

RESTRICTED

PENHOLD, ALBERTA, CANADA

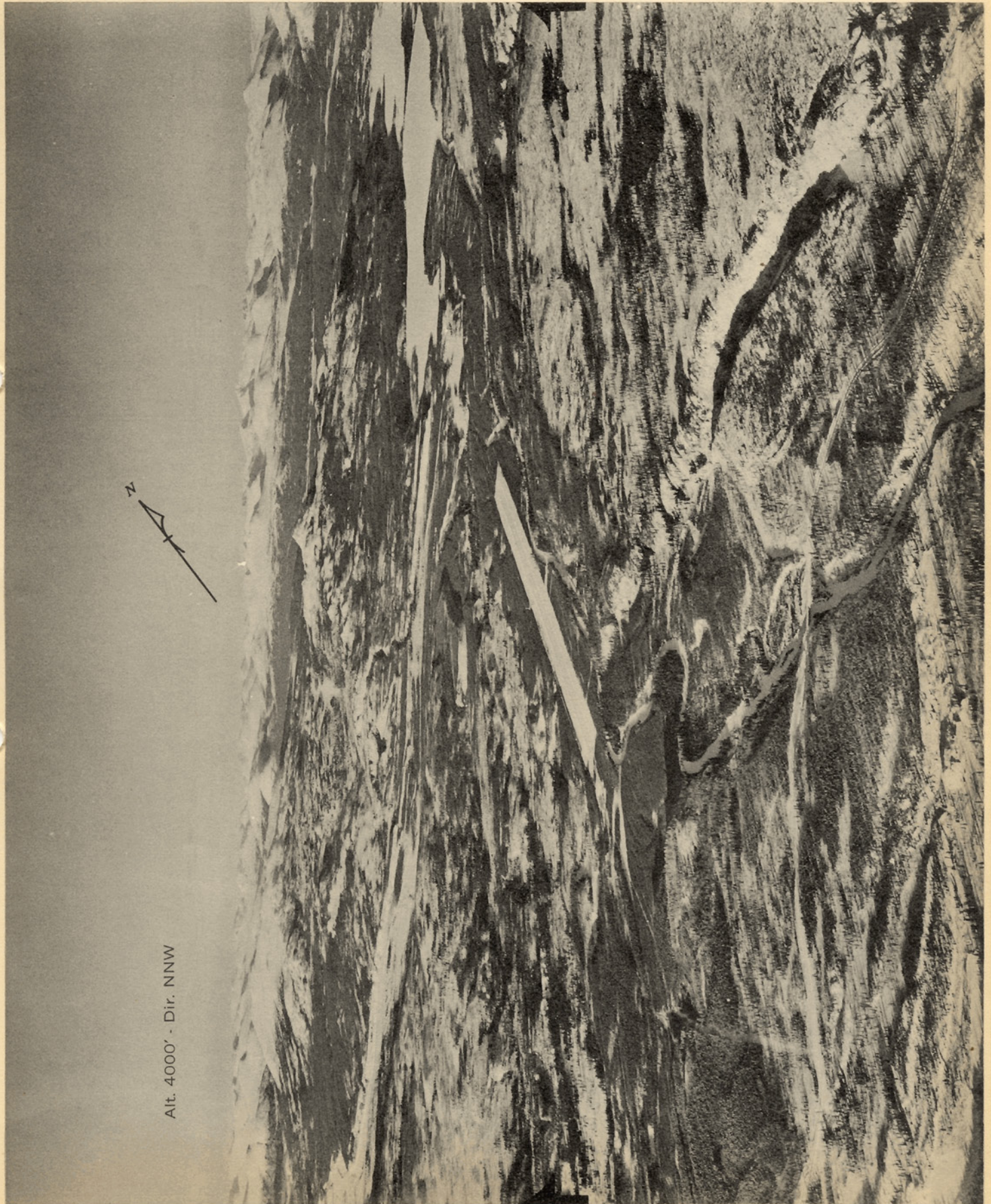


Alt. 340' - Dir. N - ATC-TEC 298R-7

RESTRICTED

PINE LAKE (FLIGHT STRIP NO. 5),
Y. T., CANADA

RESTRICTED

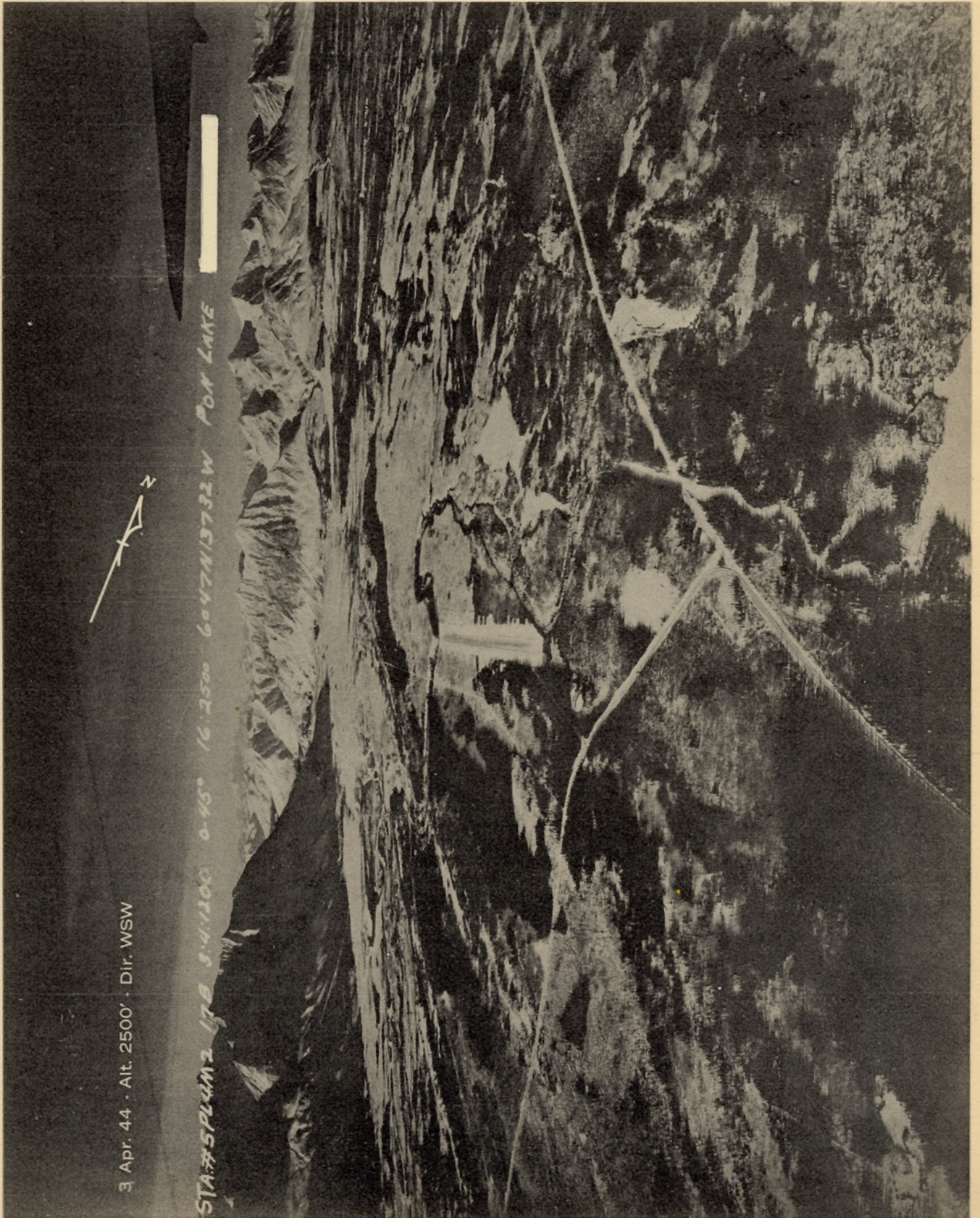


Alt. 4000' - Dir. NNW

RESTRICTED

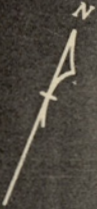
PON LAKE (FLIGHT STRIP NO. 7),
Y. T., CANADA

RESTRICTED



3 Apr. 44 · Alt. 2500' · Dir. WSW

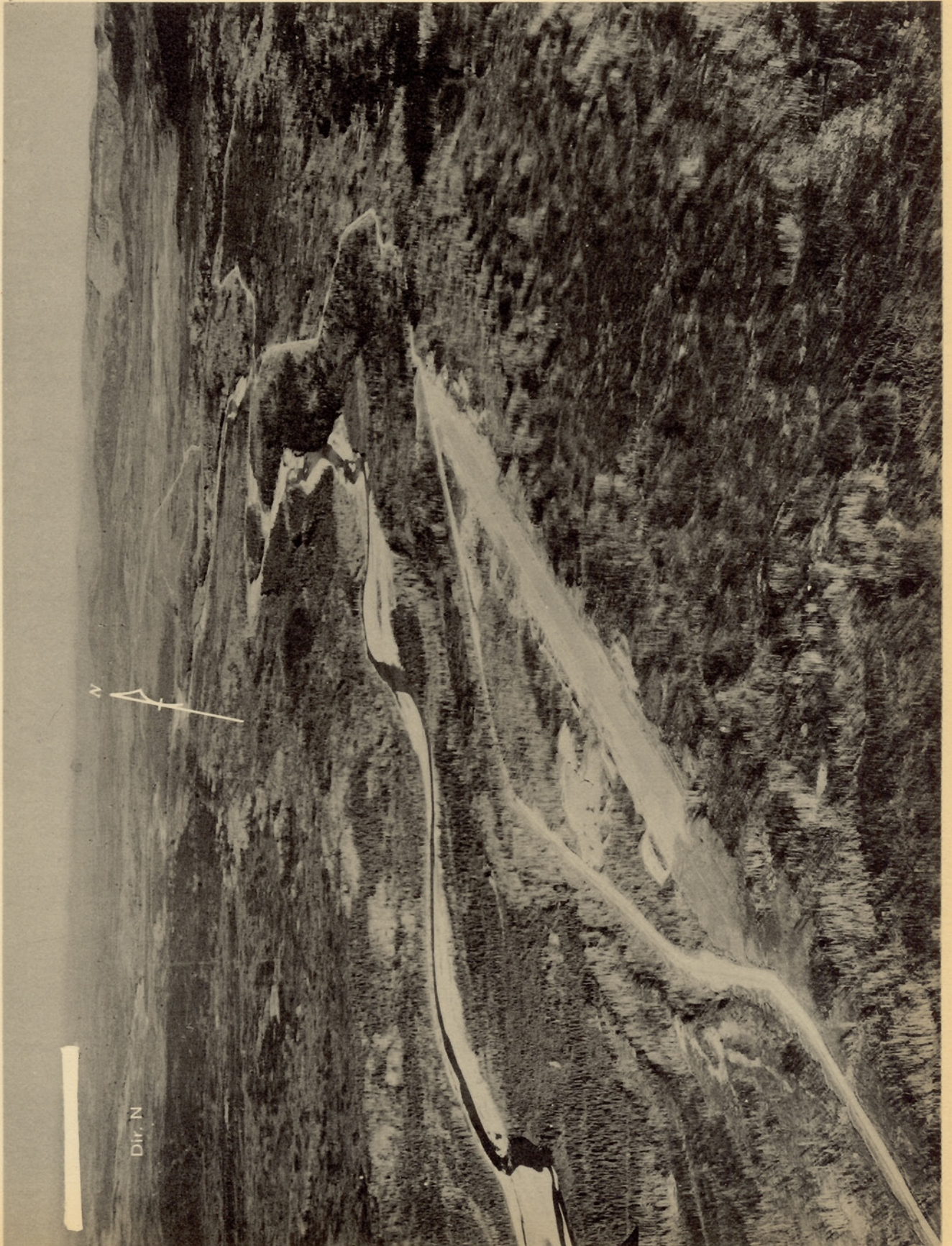
STA # 5 PLUM 2 178 3.4.1300 0-95° 16.2500 6047N13732W PON LAKE



RESTRICTED

PROPHET RIVER (FLIGHT STRIP NO. 3),
B. C., CANADA

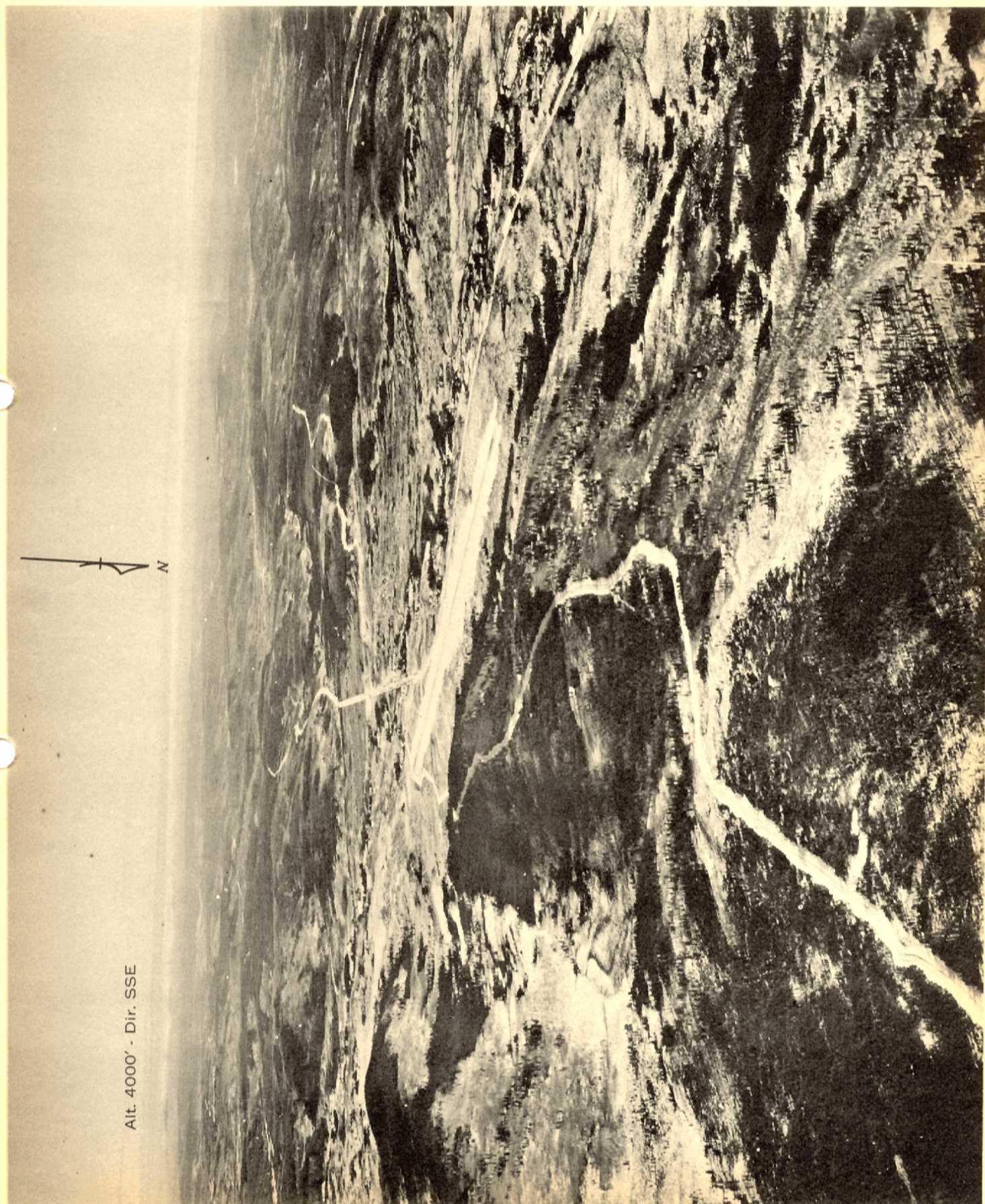
RESTRICTED



RESTRICTED

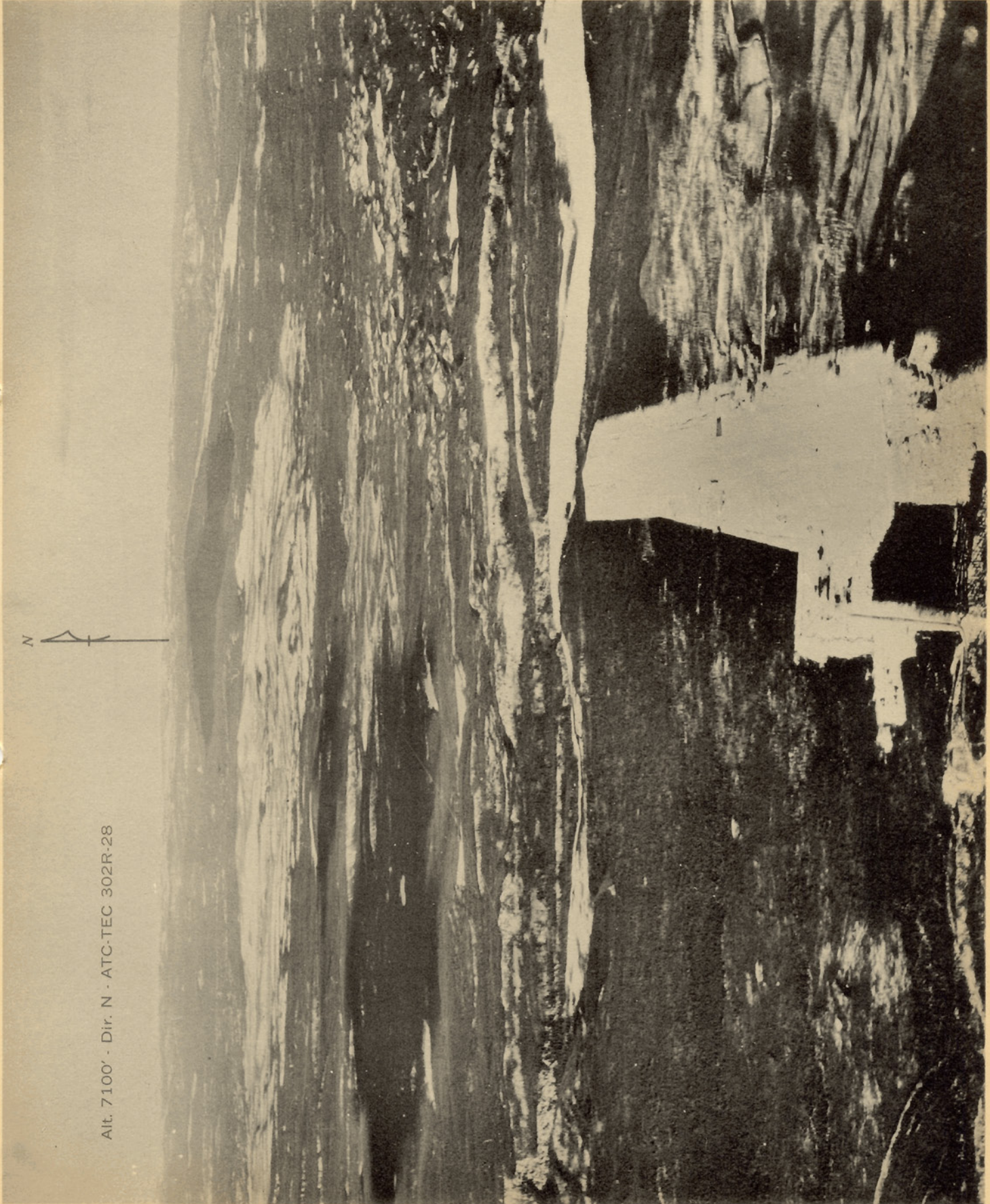
SIKANNI CHIEF (FLIGHT STRIP NO. 2),
B. C., CANADA

RESTRICTED



Alt. 4000' - Dir. SSE

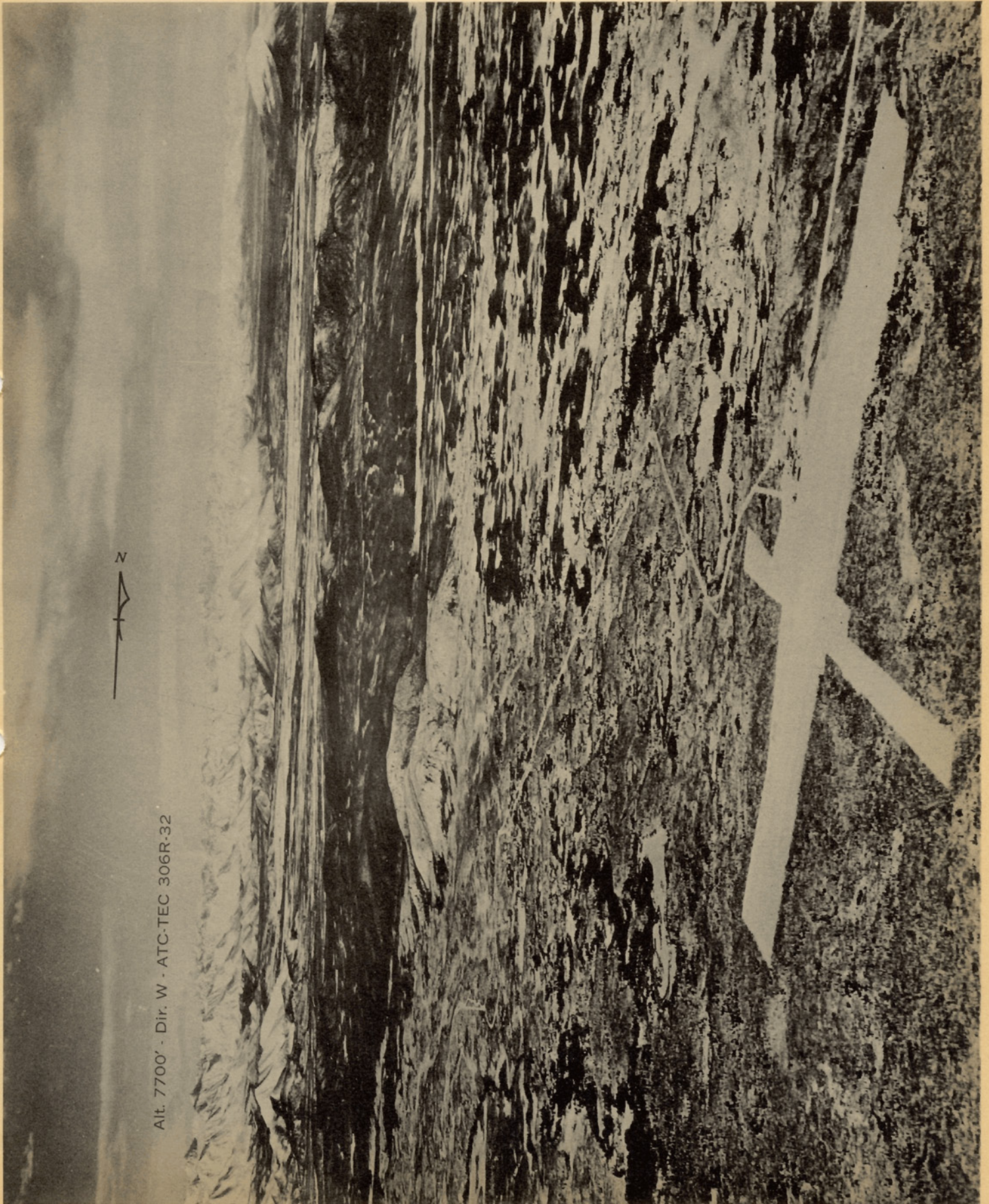
RESTRICTED



Alt. 7100' - Dir. N - ATC-TEC 302R-28

RESTRICTED

SNAG, Y. T., CANADA



Alt. 7700' - Dir. W - ATC-TEC 306R-32

RESTRICTED

SQUANGA LAKE (FLIGHT STRIP NO. 6),
Y. T., CANADA

RESTRICTED

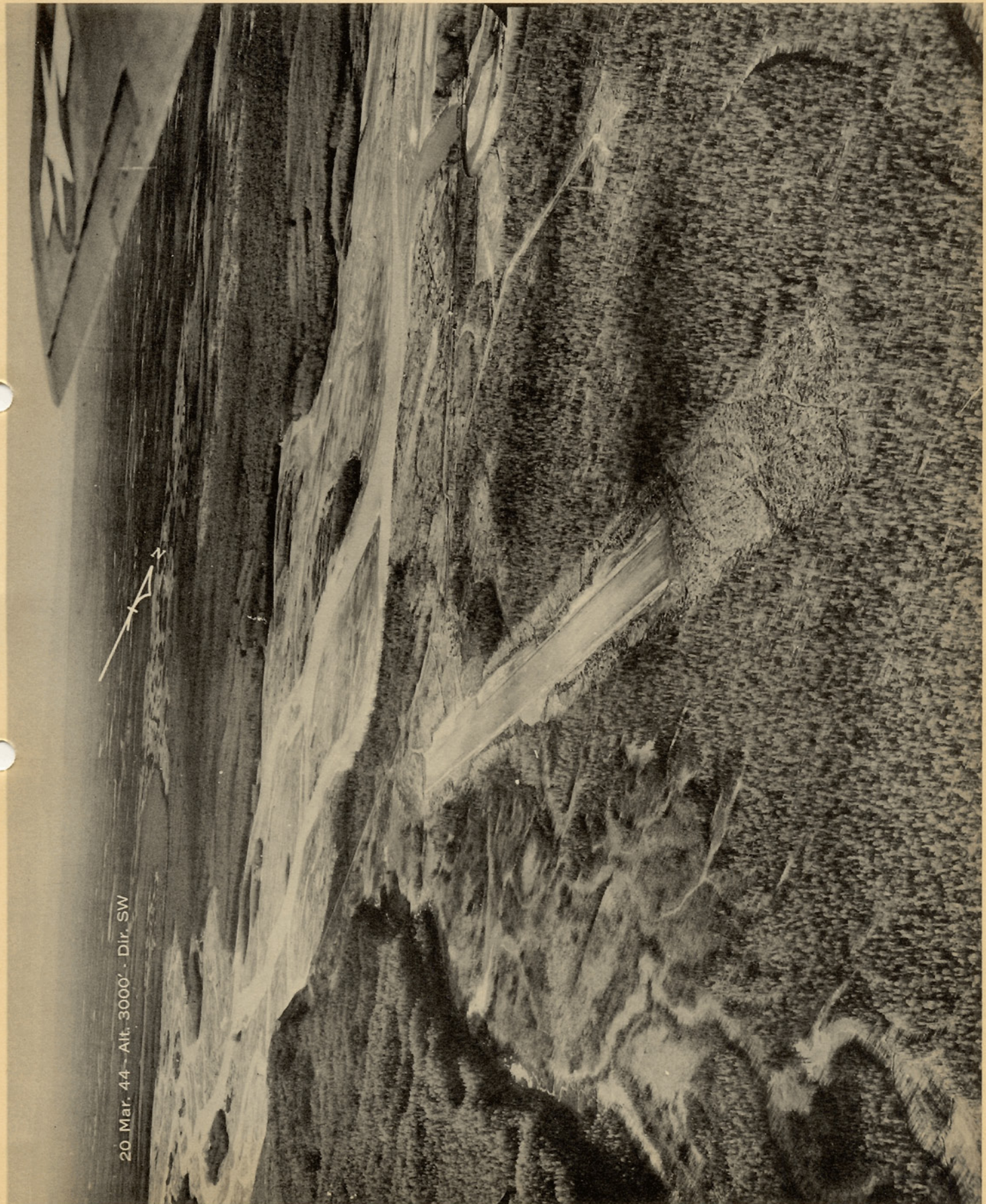


Alt. 4000' - Dir. E

RESTRICTED



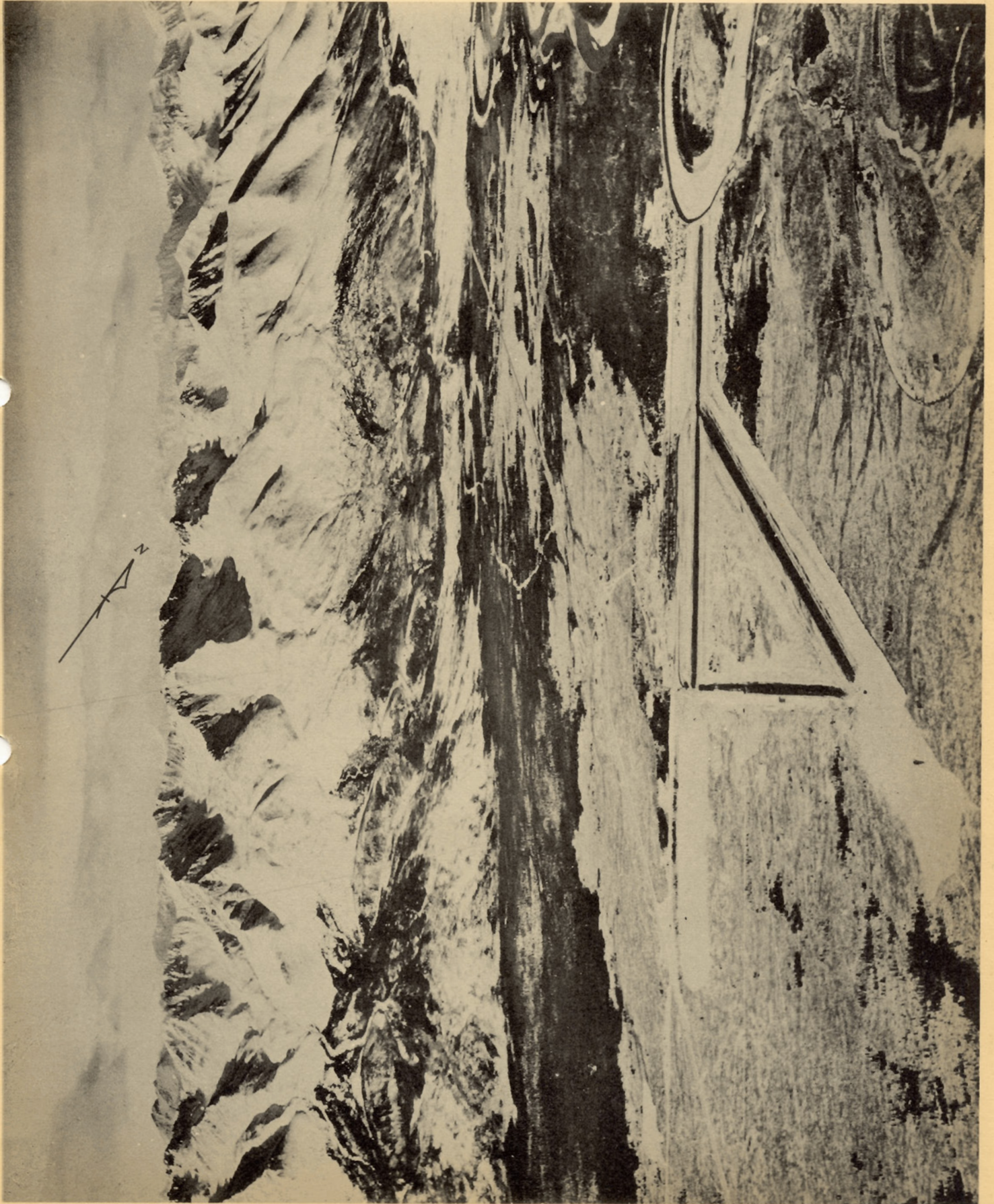
Alt. 6600' - Dir. NW



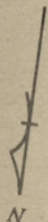
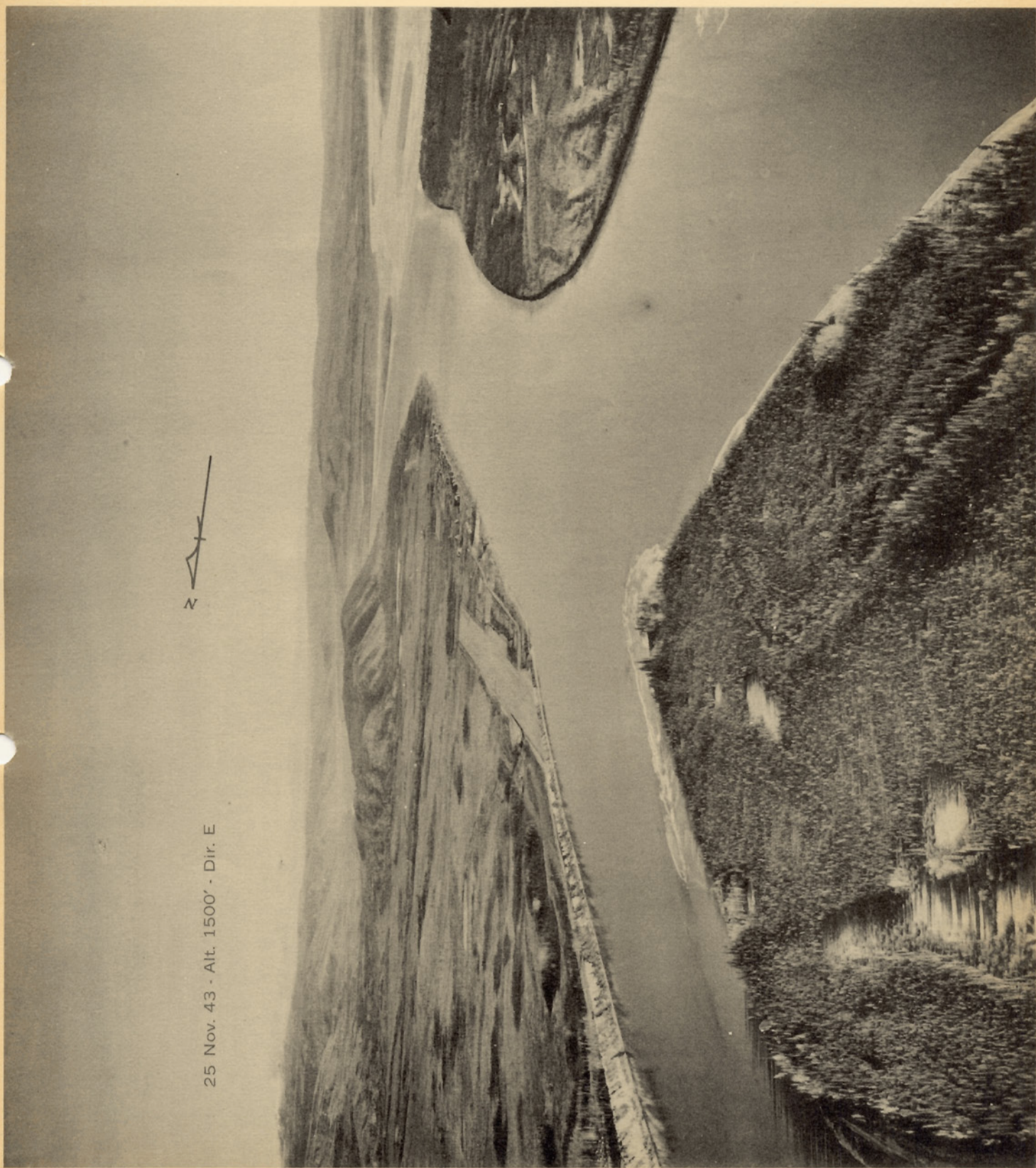
20 Mar. 44 - Alt. 3000' - Dir. SW

RESTRICTED

TANACROSS, ALASKA



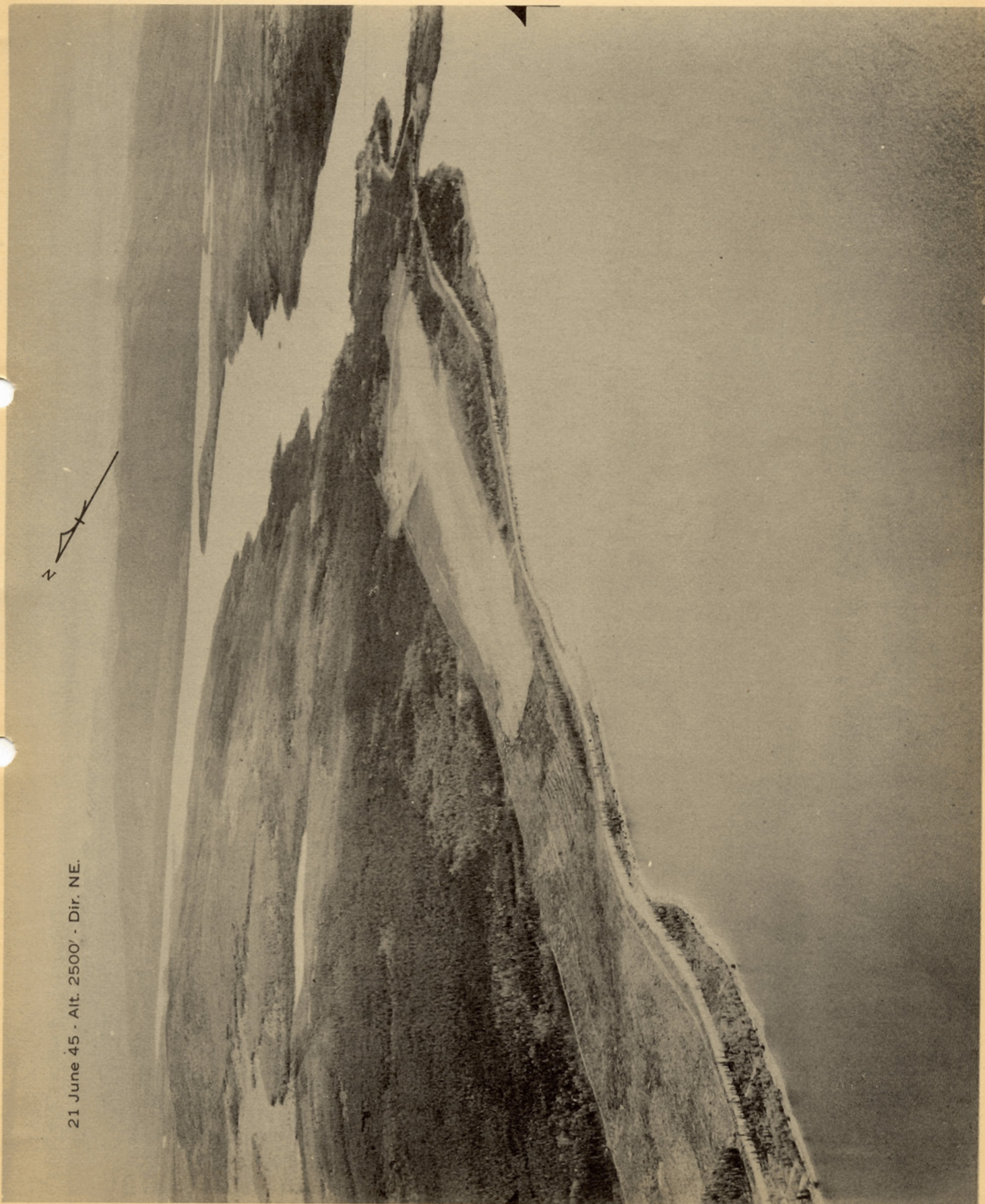
RESTRICTED



25 Nov. 43 - Alt. 1500' - Dir. E

RESTRICTED

TESLIN, Y. T. CANADA



21 June 45 - Alt. 2500' - Dir. NE.

RESTRICTED

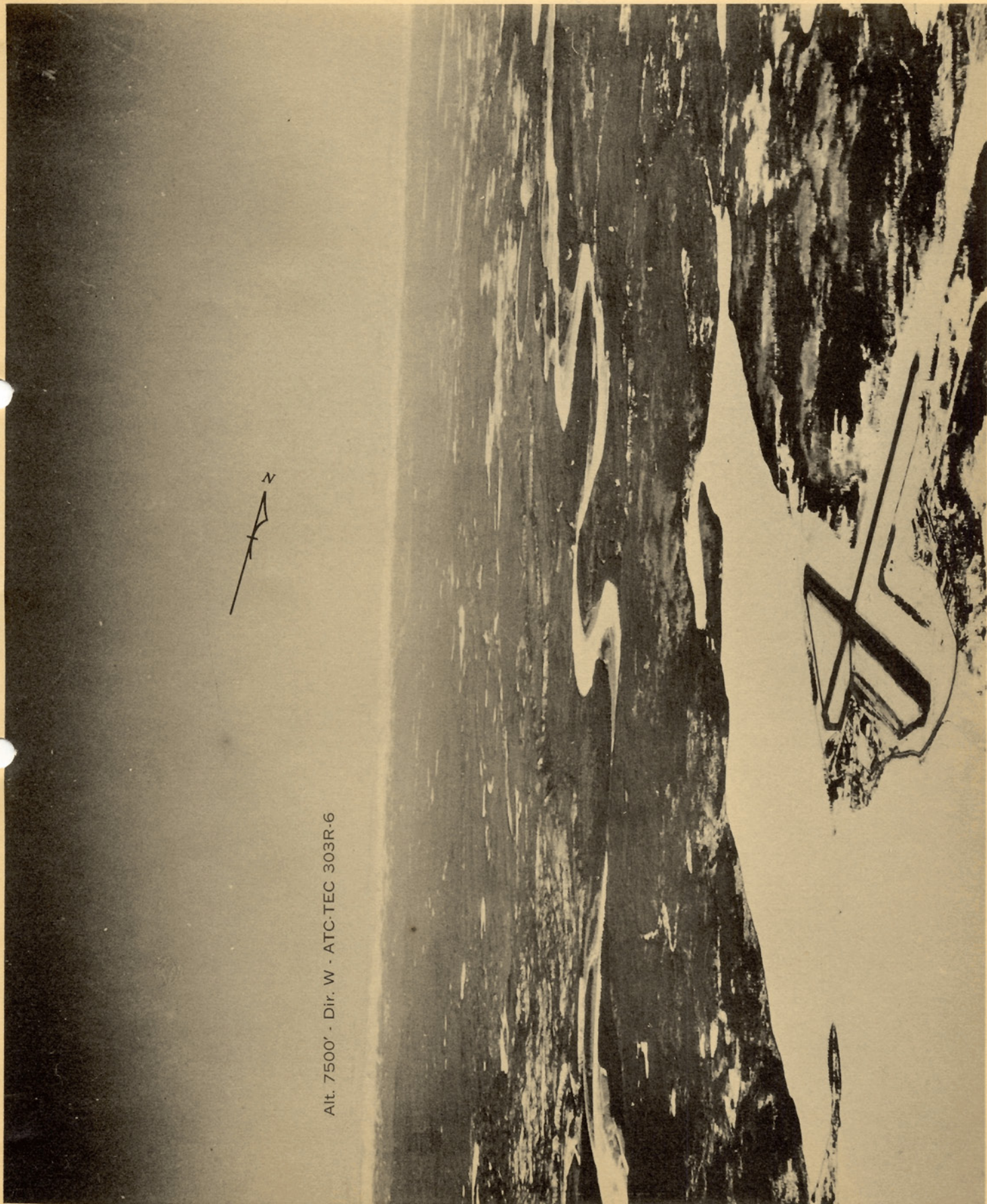
UNALAKLEET, ALASKA



Alt. 1000' - Dir. NNW

RESTRICTED

WATSON LAKE, Y. T., CANADA

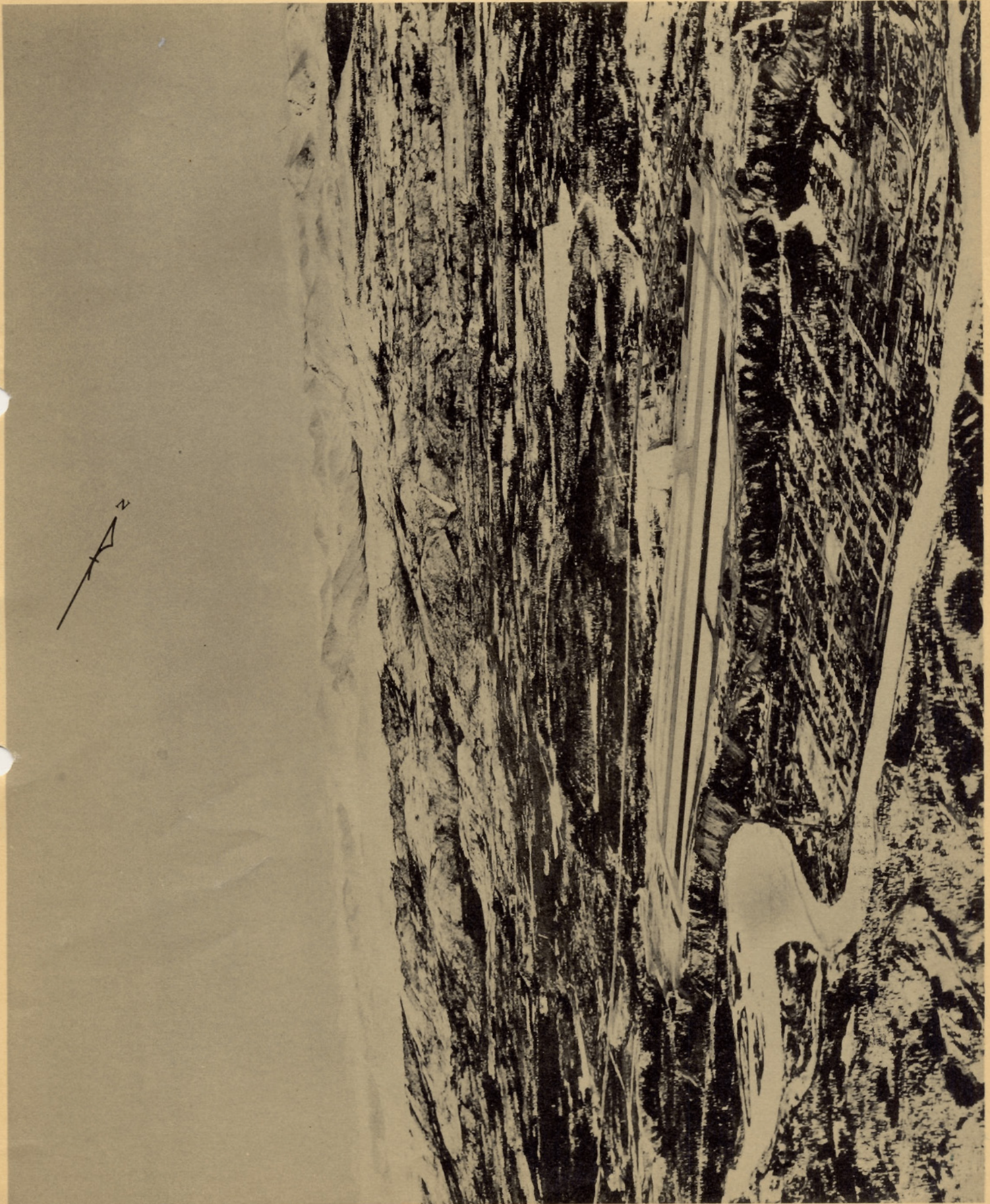


Alt. 7500' - Dir. W - ATC-TEC 303R-6

RESTRICTED

RESTRICTED

WHITEHORSE, Y. T., CANADA



RESTRICTED

