

5268

RESTRICTED

PHOTOGRAPHIC SUPPLEMENT TO
PILOT'S HANDBOOK
U.S. ARMY AIR FORCES

ALONG ROUTE
GREAT FALLS - NOME

IMPORTANT

UPON COMPLETION OF FLIGHT, DELIVER THIS HANDBOOK IMMEDIATELY TO OPERATIONS OFFICER AT DESTINATION - REGARDLESS OF WHERE IT WAS ISSUED.

CAUTION

It should be borne in mind that conditions along this route are changing rapidly. Should any of the information be found inaccurate or incomplete, it is requested that you make a report to the nearest briefing office.

PREPARED BY
HDQ. AERONAUTICAL CHART SERVICE
ARMY AIR FORCES
WASHINGTON, D. C.

RESTRICTED

RESTRICTED

AIRPORTS, CHECK POINTS AND TYPICAL TERRAIN
PHOTOGRAPHIC INDEX

ALONG ROUTE GREAT FALLS — NOME
IN ALPHABETICAL ORDER

ANCHORAGE (ELMENDORF), ALASKA
ANCHORAGE (ELMENDORF), ALASKA
AISHIHIK, Y. T., CANADA
BEATTON RIVER, B. C., CANADA
BIG DELTA, ALASKA
BURWASH LANDING (FLIGHT STRIP No. 8),
Y. T., CANADA
CALGARY, ALBERTA, CANADA
CUT BANK, MONTANA
DAWSON CREEK (FLIGHT STRIP No. 1),
B. C., CANADA
EDMONTON, ALBERTA, CANADA
FAIRBANKS (LADD FIELD), ALASKA
FAREWELL, ALASKA
FORT NELSON, B. C., CANADA
FORT ST. JOHN, B. C., CANADA
GALENA, ALASKA
GRANDE PRAIRIE, ALBERTA, CANADA
GREAT FALLS (ARMY AIR BASE), MONTANA
GREAT FALLS (GORE FIELD), MONTANA
GULKANA, ALASKA
LETHBRIDGE, ALBERTA, CANADA
LIARD CANYON (FLIGHT STRIP No. 4),
B. C., CANADA
MCGRATH, ALASKA
MCGRATH, ALASKA
MILE 26 (LADD FIELD SATELLITE), ALASKA

NAMAO, ALBERTA, CANADA
NENANA, ALASKA
NOME (MARK FIELD), ALASKA
NOME (SATELLITE FIELD), ALASKA
NORTHWAY, ALASKA
PENHOLD, ALBERTA, CANADA
PINE LAKE (FLIGHT STRIP No. 5),
Y. T., CANADA
PON LAKE (FLIGHT STRIP No. 7),
Y. T., CANADA
PROPHET RIVER (FLIGHT STRIP No. 3),
B. C., CANADA
SIKANNI CHIEF (FLIGHT STRIP No. 2),
B. C., CANADA
SMITH RIVER, B. C., CANADA
SNAG, Y. T., CANADA
SQUANGA LAKE (FLIGHT STRIP No. 6),
Y. T., CANADA
SUMMIT, ALASKA
TALKEETNA, ALASKA
TANACROSS, ALASKA
TANANA, ALASKA
TESLIN, Y. T., CANADA
UNALAKLEET, ALASKA
WATSON LAKE, Y. T., CANADA
WHITEHORSE, Y. T., CANADA

RESTRICTED

ANCHORAGE (ELMENDORF), ALASKA



Alt. 7000 Dir. ENE

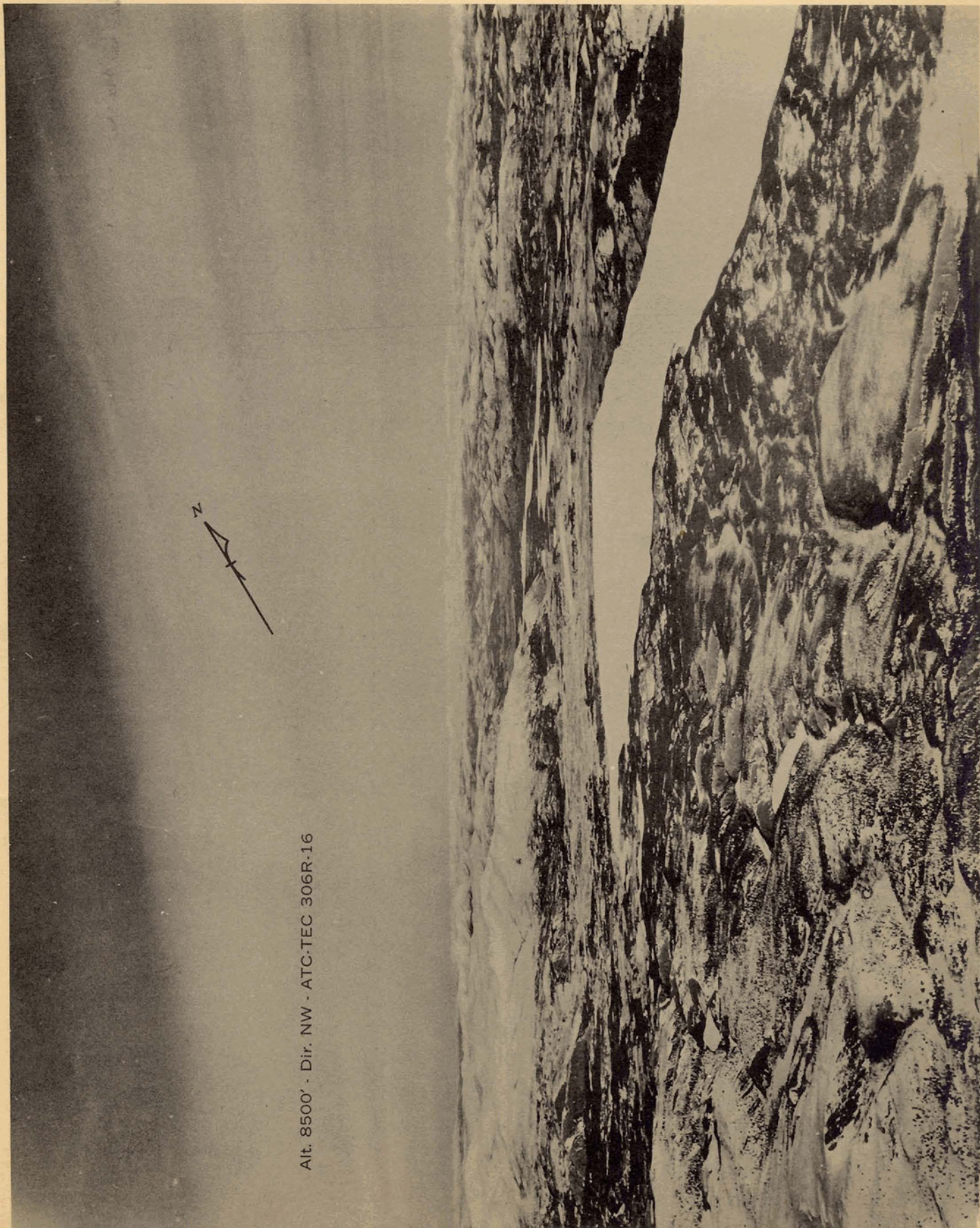
ANCHORAGE (ELMENDORF), ALASKA

RESTRICTED

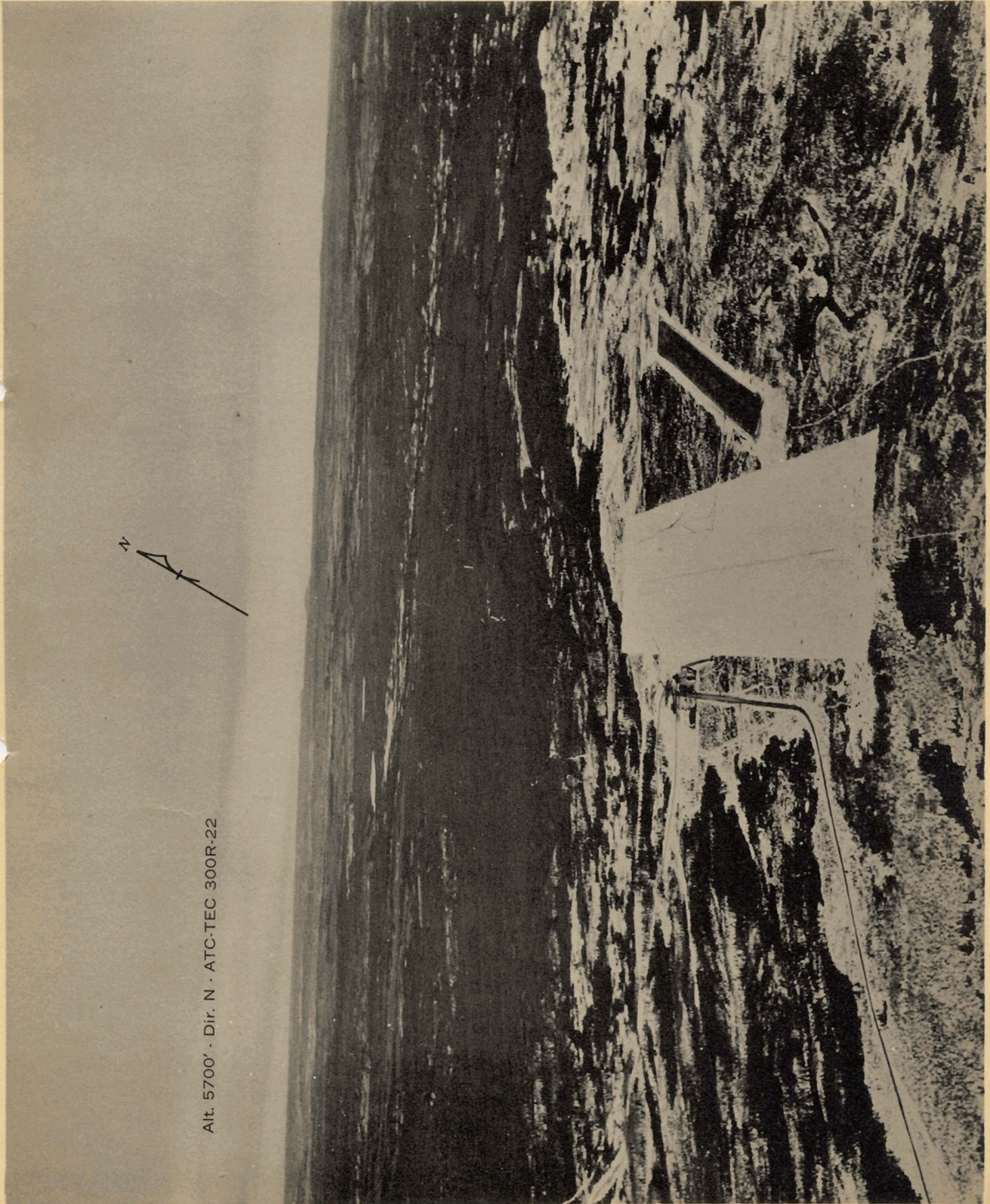


Alt. 7000' - Dir. - NNW

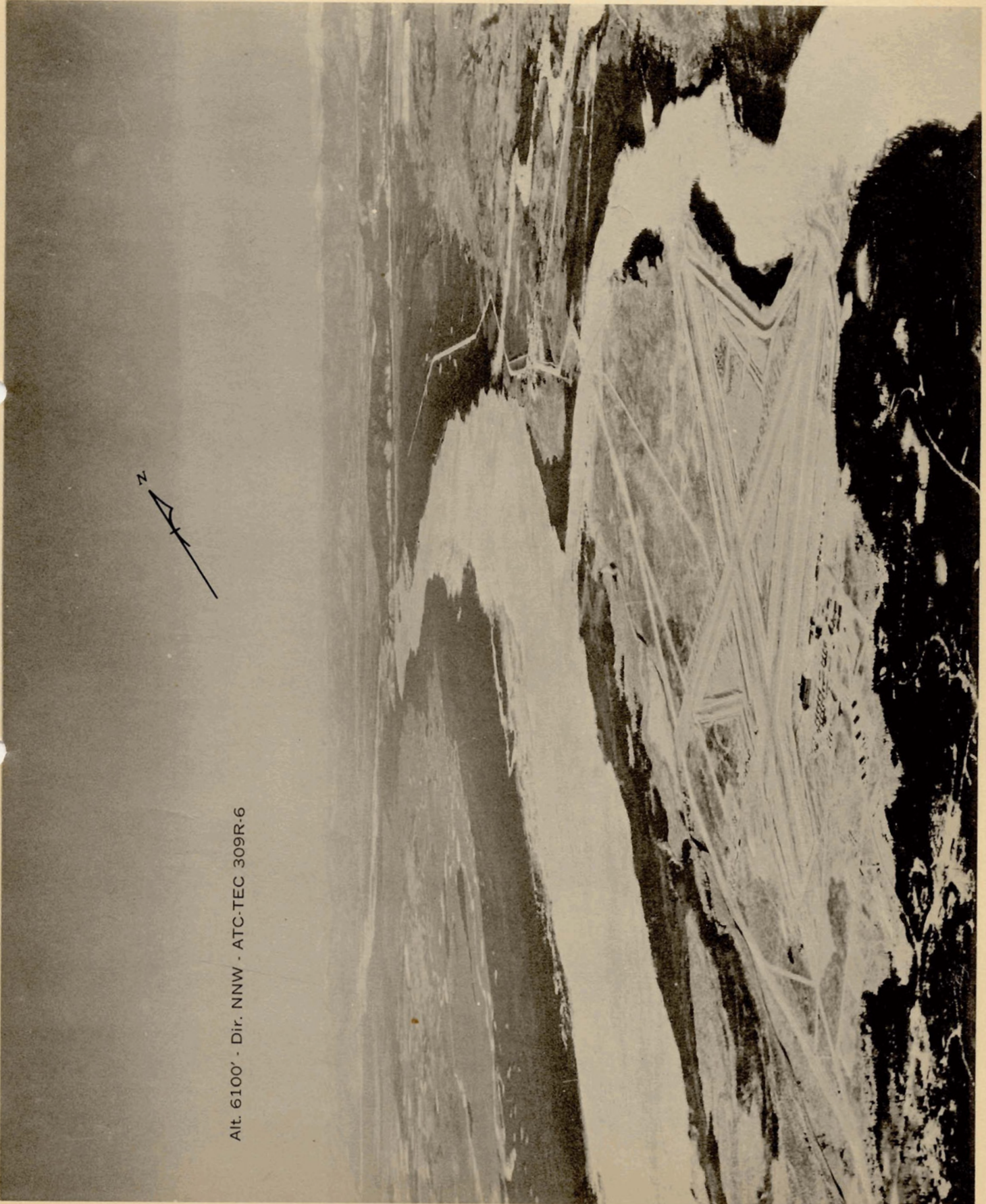
RESTRICTED



Alt. 8500' · Dir. NW · ATC-TEC 306R-16



Alt. 5700' - Dir. N - ATC-TEC 300R-22



Alt. 6100' - Dir. NNW - ATC-TEC 309R-6

BURWASH LANDING (FLIGHT STRIP NO. 8),

RESTRICTED

Y. T., CANADA



16 June 45 - Alt. 2400' - Dir. NE.

RESTRICTED

RESTRICTED

CALGARY, ALBERTA, CANADA



2 July 45 - Alt. 2500' - Dir. SE.

RESTRICTED

RESTRICTED

CUT BANK, MONTANA



2 July 45 - Alt. 3500' - Dir. NW.

RESTRICTED

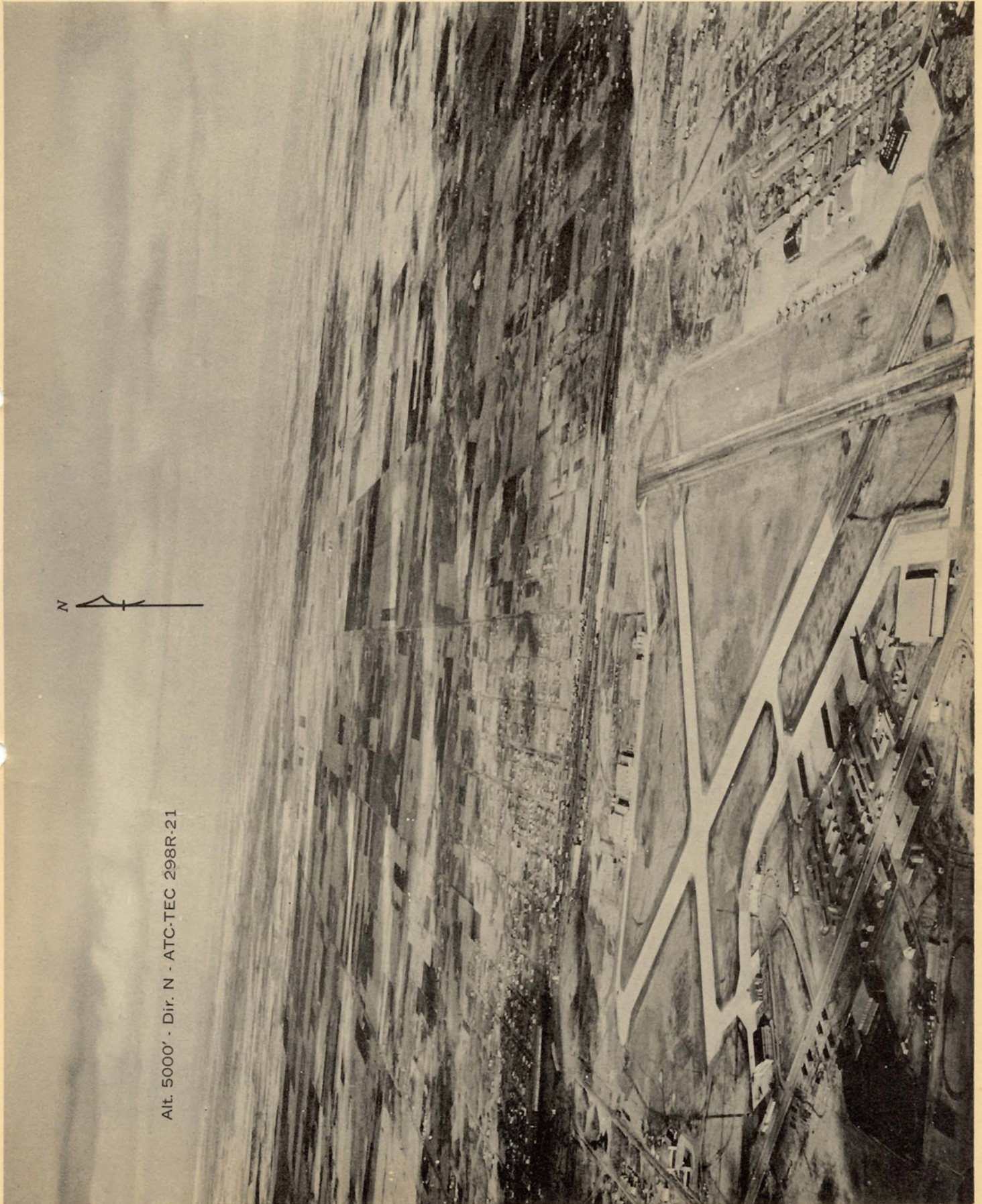
DAWSON CREEK (FLIGHT STRIP NO. 1),
B. C., CANADA

RESTRICTED



9 Oct 43 - Alt. 5500' - Dir. W

RESTRICTED



Alt. 5000' - Dir. N - ATC-TEC 298R-21

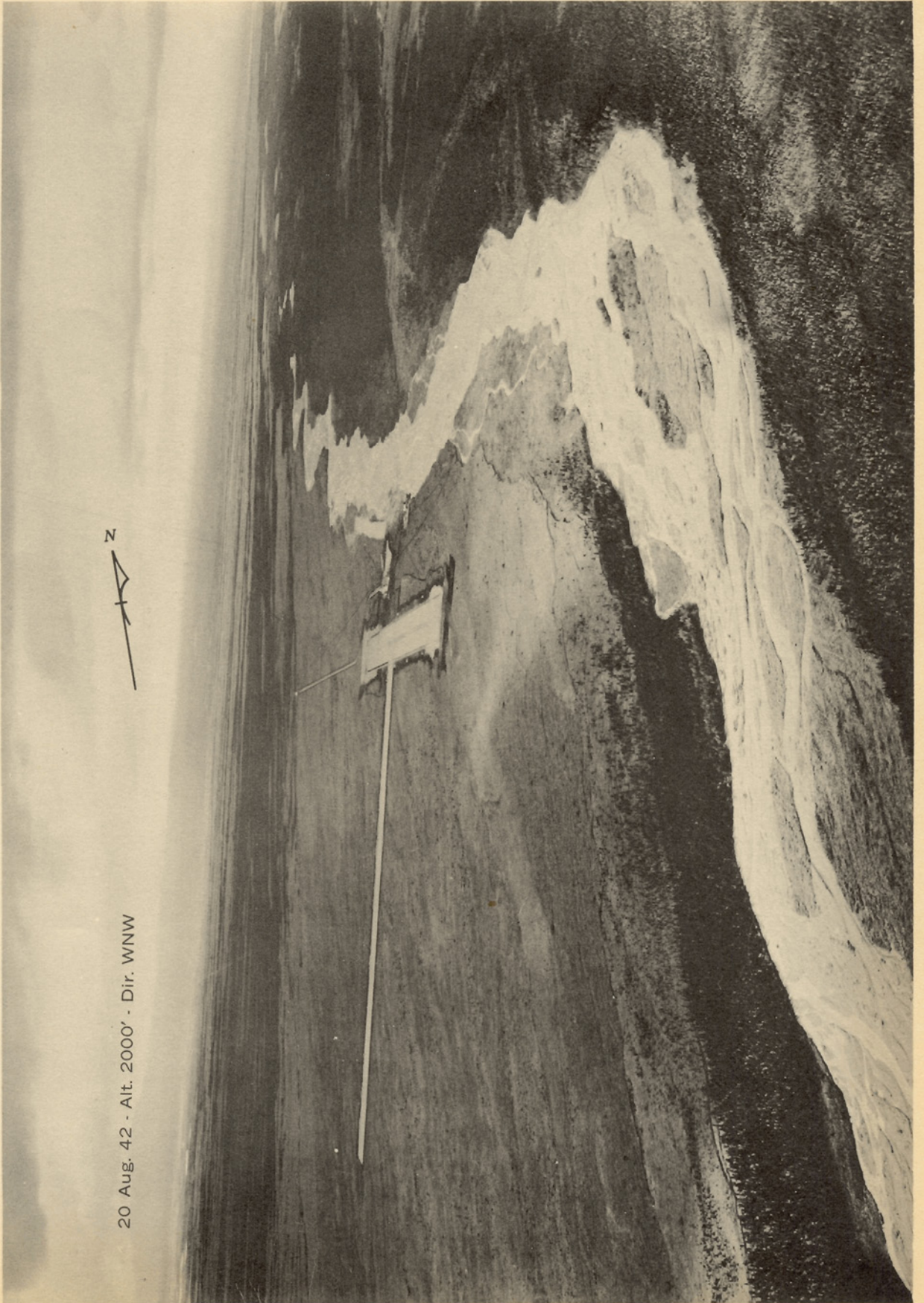
RESTRICTED

FAIRBANKS (LADD FIELD), ALASKA

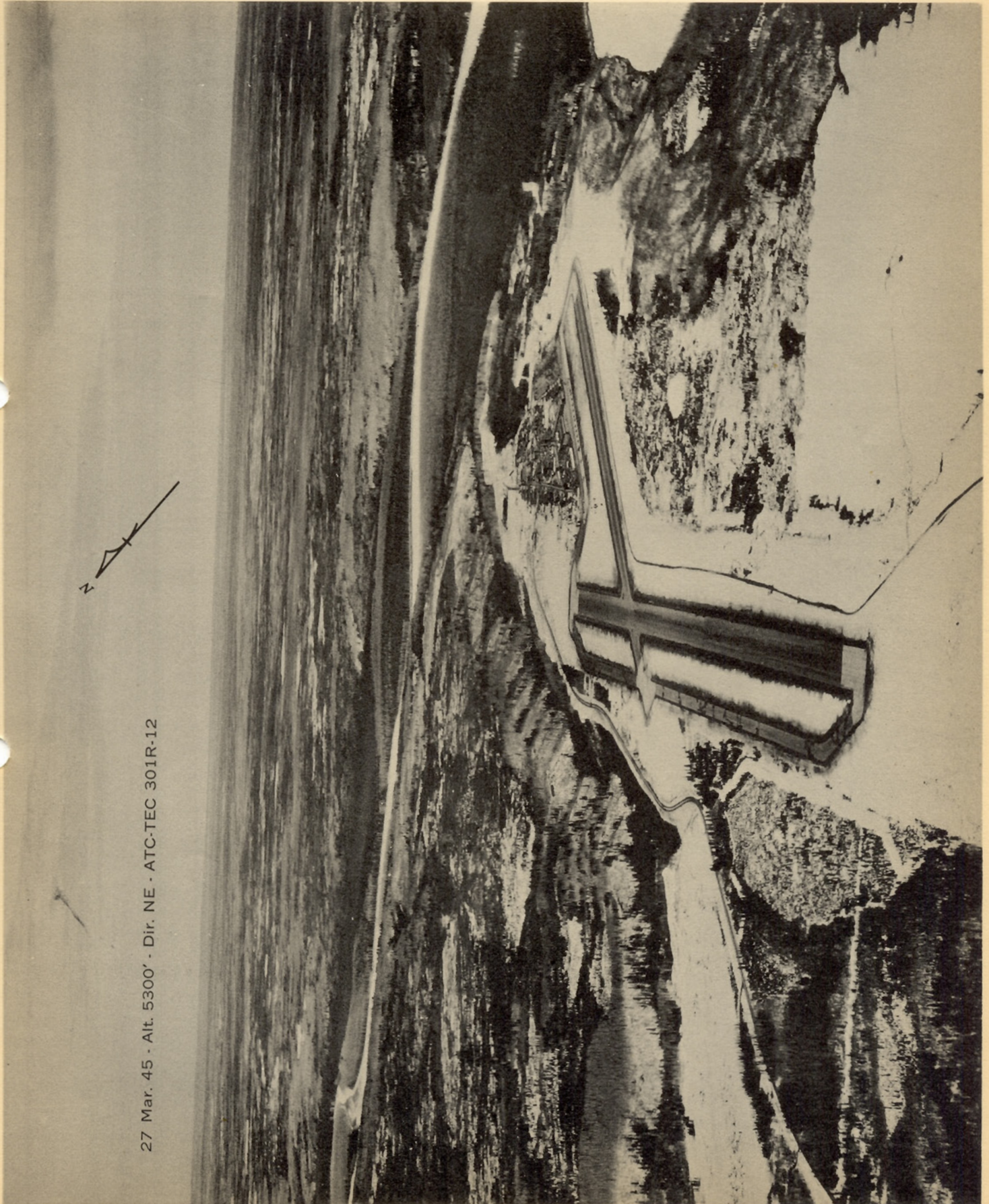


Alt. 3400' - Dir. WNW - ATC-TEC 308R-36

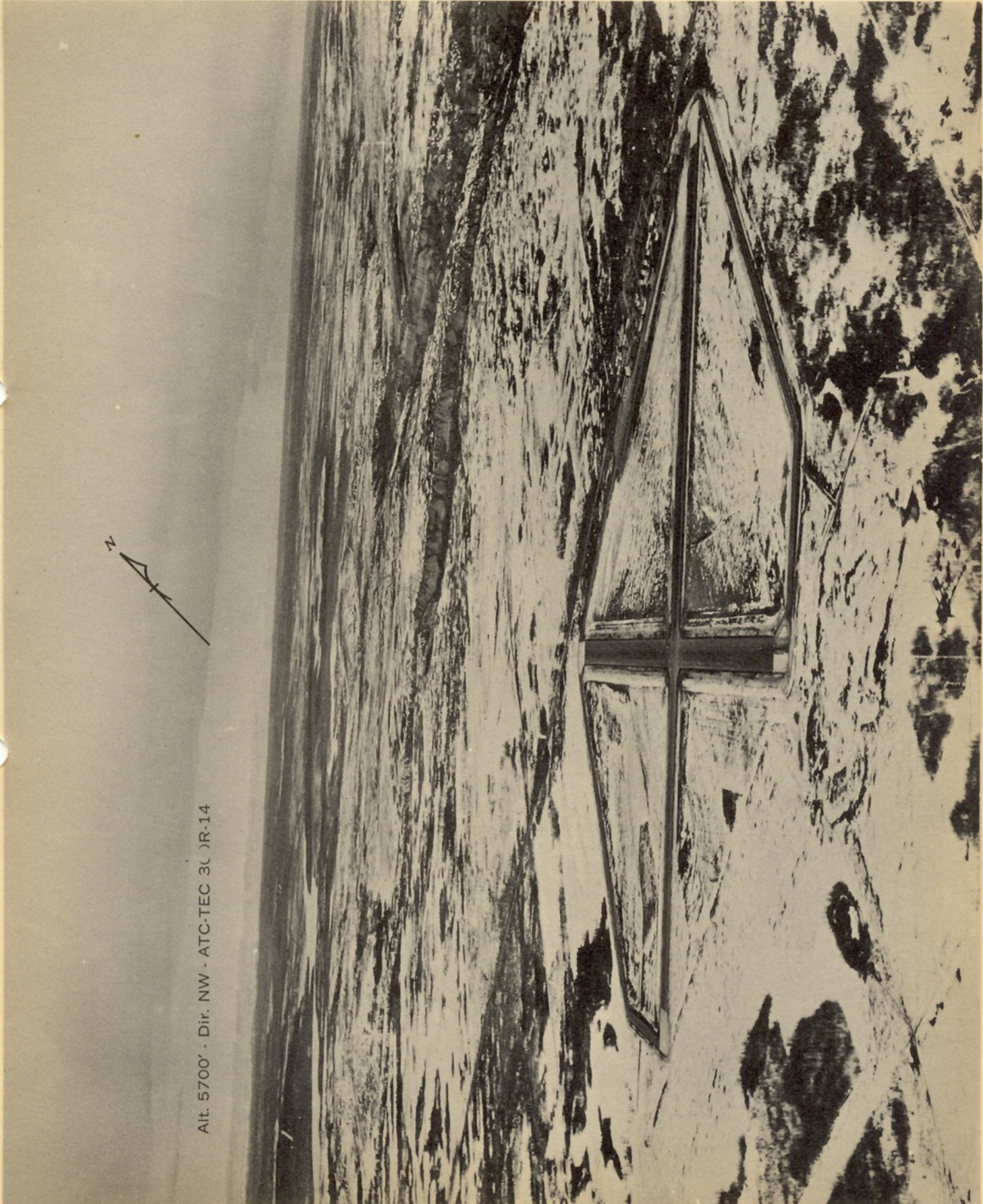
RESTRICTED



20 Aug. 42 - Alt. 2000' - Dir. WNW



27 Mar. 45 - Alt. 5300' - Dir. NE - ATC-TEC 301R-12



Alt. 5700' - Dir. NW - ATC-TEC 30 DR-14

RESTRICTED

GALENA, ALASKA



Alt. 4000' - Dir. E

RESTRICTED

RESTRICTED

GRANDE PRAIRIE, ALBERTA, CANADA

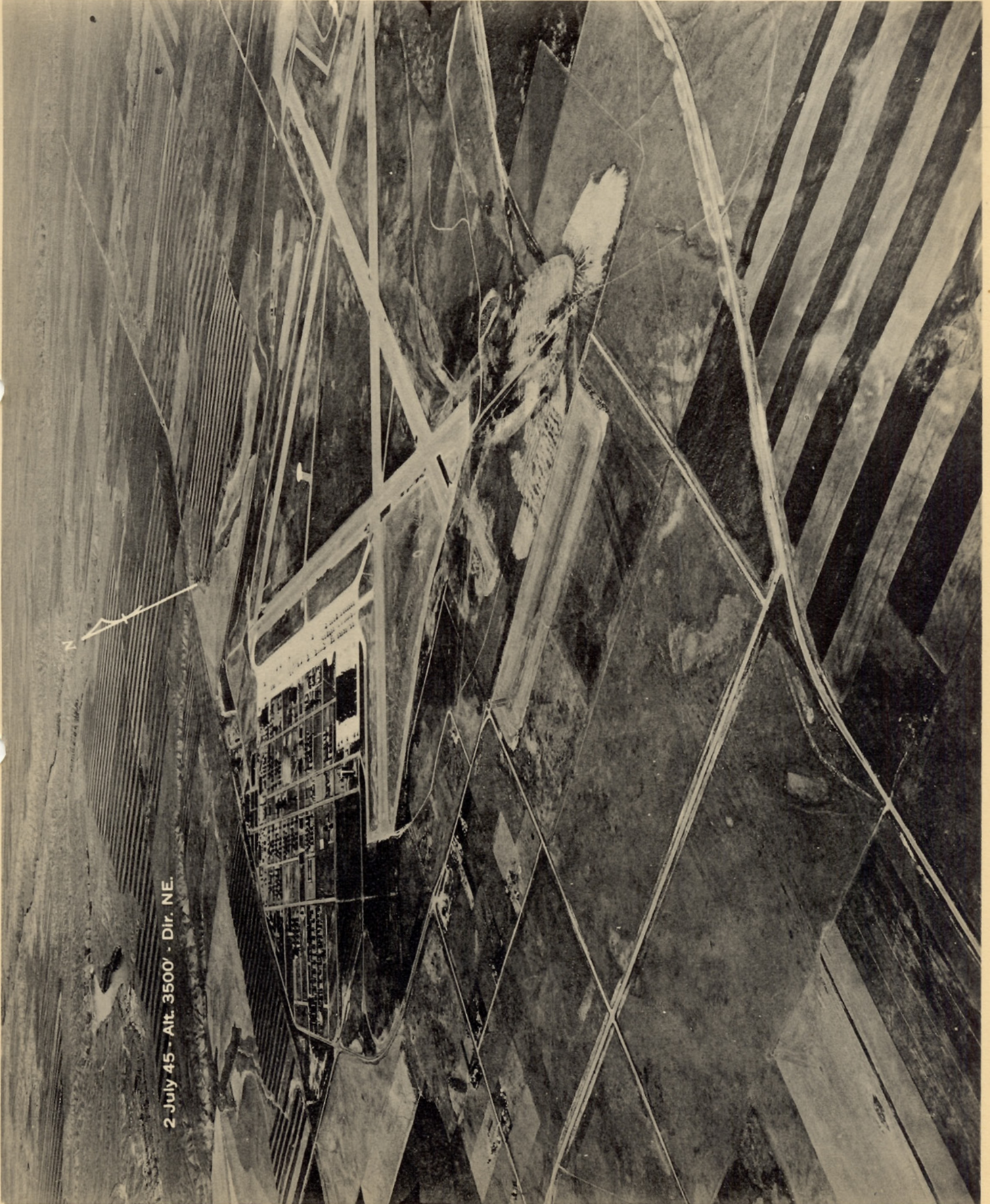


Alt. 5300' - Dir. NW - ATC-TEC 299R-41

RESTRICTED

GREAT FALLS (ARMY AIR BASE), MONTANA

RESTRICTED



2 July 45 - Alt. 3500' - Dir. NE.

RESTRICTED

RESTRICTED

GREAT FALLS (GORE FIELD), MONTANA

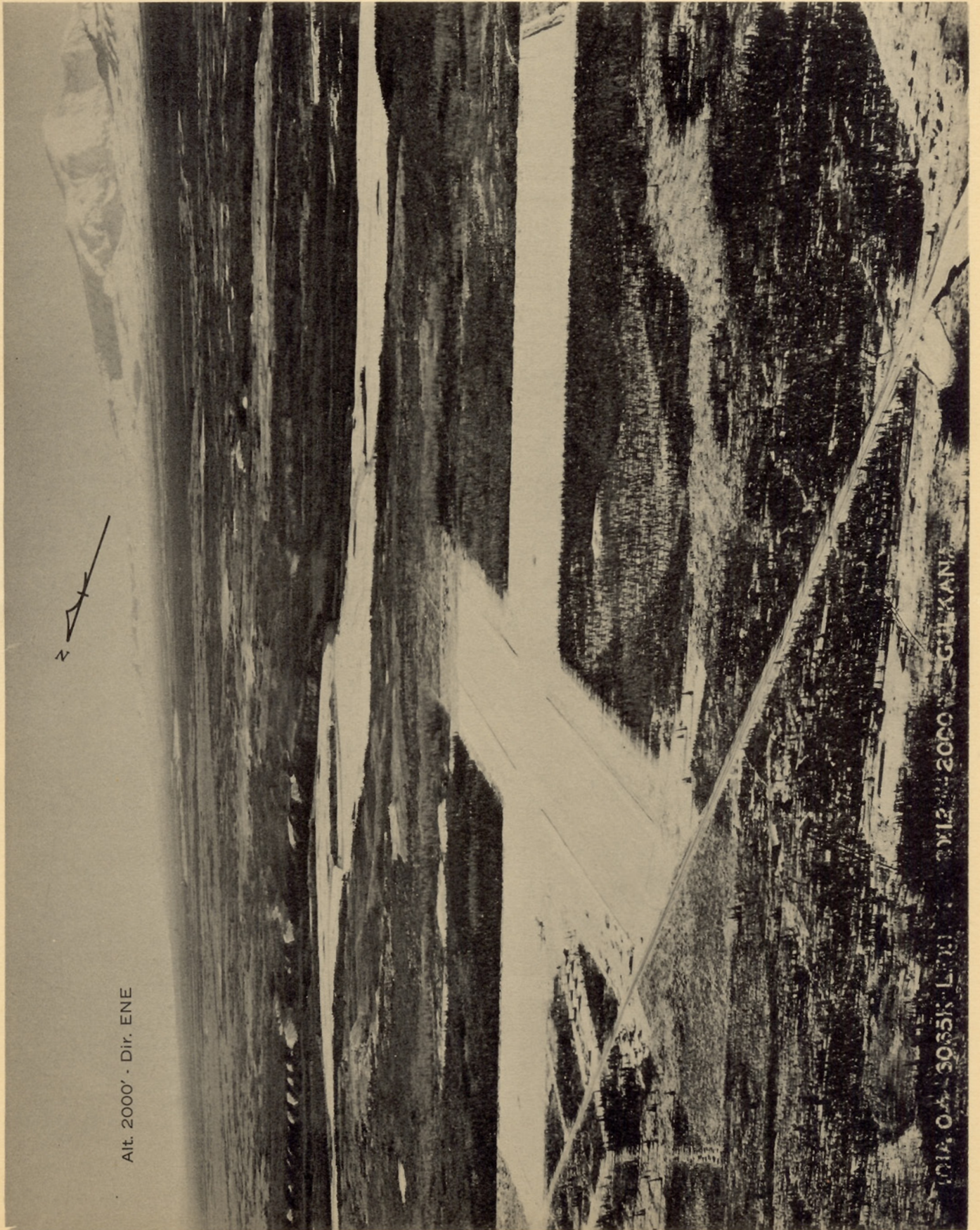


2 July 45 - Alt. 3336' - Dir. SSE.

RESTRICTED

RESTRICTED

GULKANA, ALASKA



Alt. 2000' - Dir. ENE

012 04 5055K L 10
012 04 2000 GULKANA

RESTRICTED